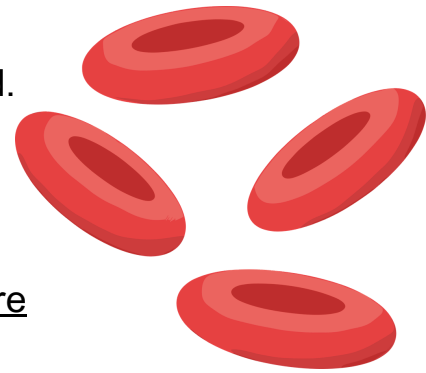


We're delighted to share the third quarterly newsletter from the Transfusion Research Network (TRN). In this issue you'll hear updates from recent transfusion research and ways to get involved.

We'd love to hear from you! If you have questions or want more information, just drop us an email at:

✉ [transfusionresearchnetwork@nhsbt.nhs.uk](mailto:transfusionresearchnetwork@nhsbt.nhs.uk)

We are pleased to announce our website is live! Please visit us [here](#) for more research news and updates.



## Research Updates

### James Lind Alliance

The survey asking the transfusion community, with patients front and centre, what their top 10 research priorities are for blood transfusion and donation has been . A total of 243 responses were received, with hundreds of questions being submitted. The Systematic Review Initiative (SRI) team are working to collate and organise these questions before the final workshop planned for Spring 2027. Visit the webpage for the [Transfusion Evidence Library](#), the SRI resource for new transfusion evidence.

Want to know more about the JLA? Click [here](#).

### PROPHECY-II

12 sites are currently live and recruiting patients for this phase III multi-site clinical trial which is looking at the efficacy of treating patients with prothrombin complex concentrate compared to the standard treatment of Fresh Frozen Plasma, for bleeding in the 24 hours after cardiac surgery.



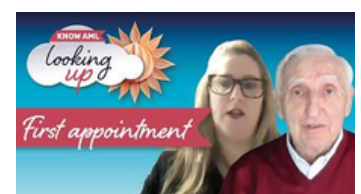
### WASH-T

NHSBT is partnering with the Australian Blood Service Lifeblood to run a trial providing washed red cell units to premature infants (born 24-28 weeks). The goal is to reduce morbidity and mortality in this vulnerable patient group. The first patients have been transfused with the aim of recruiting 200 patients in total. Please visit the trial [website](#) for more details.



### Public and Patient Involvement

The TRN patient representative Anna Mamwell has been working with KnowAML, an initiative for patients with acute myeloid leukaemia to provide the education and research they need to deal with their diagnosis. Visit the website [here](#) to see more.



# The SWiFT Trial - Results



The SWiFT trial is a multi-center double blind clinical trial which aimed to measure the difference between transfusion of 2 whole blood units, compared to standard components in a prehospital setting.

Transfusion in a prehospital setting has been shown to lower the odds of death in the first 24 hours after penetrating injuries, but there are many logistical issues with transfusing patients in these scenarios:

- Lack of space for storage,
- Weight restrictions and
- Limited intravenous access

Whole blood transfusions could provide a useful solution to these issues.

Patients were assigned to the standard care group of up to 2 units of red cells and 2 units of plasma (1:1), or the whole blood group of up to 2 units of whole red cells.

## Results

The use of whole blood was not superior to using red cells and plasma components separately in this trial.

Scan the code to read the study in full, published in the New England Journal of Medicine or visit the link [here](#).



## Research Opportunities



PaTRIC is the UK arm of an international audit evaluating transfusion support for patients with liver cirrhosis, focusing on platelet and coagulation factor support.

Researchers are looking for interested healthcare professionals to collect data on patients at their hospital admitted with liver cirrhosis over a 2-3 week period in June. Smaller hospitals are encouraged to get involved, to give a full picture of treatment across the UK.

For more information please contact the transfusion research network, or visit the audit site [here](#).